

Eclipse BoostPak

Packaged Gas Booster Systems

Series MS

Version 2

Medium Flow Simplex

| Parameter | Specification | | | | | | | |
|--|---------------|---------------|---------------|---------------|---------------|---------------|---------------|---------------|
| Model Number | MS3316 | MS3314 | MS3412 | MS4414 | MS4617 | MS4619 | MS4623 | MS4628 |
| Assembly Number | 10024850 | 10024851 | 10024852 | 10024853 | 10024854 | 10024855 | 10024856 | 10024857 |
| Booster | HBLC3316-3/4 | HB3314-1/2 | HB3412-1/2 | HB4414-1 | HB4617-1 | HB4619-2 | HB4623-5 | HB4628-5 |
| Minimum Flow (cfh)^a | 150 | 1,060 | 2,320 | 4,080 | 7,700 | 5,900 | 22,000 | 9,700 |
| Maximum Flow (cfh)^a | 5,500 | 5,300 | 11,600 | 20,400 | 23,000 | 17,800 | 33,000 | 14,600 |
| Pressure Boost^a | 10 | 9 | 7 | 7 | 13 | 18 | 26 | 34 |
| Turndown | 37:1 | 5:1 | 5:1 | 5:1 | 3:1 | 3:1 | 1.5:1 | 1.5:1 |
| Primary Voltage | b, c, d, e | b, c, d, e | b, c, d, e | c, d | c, d | c, d | c, d | c, d |
| Motor Horsepower | 3/4 | 1/2 | 1/2 | 1 | 1 | 2 | 5 | 5 |
| Approximate Wt. (lbs)^f | 580 | 530 | 550 | 620 | 780 | 880 | 1100 | 1250 |

- Notes: **a** Ratings are nominal, in CFH of natural gas, at standard conditions and depend on customer interface piping.
b 115/230 VAC, 1Φ, 60Hz
c 230/460 VAC, 3Φ, 60Hz
d 208 VAC, 3Φ, 60Hz
e 208 VAC, 1Φ, 60Hz
f Weight is approximate
 NEMA 4 rating; NEMA 7 rating option available (footprint increases with this option)

Dimensional Information in Millimeters (in)

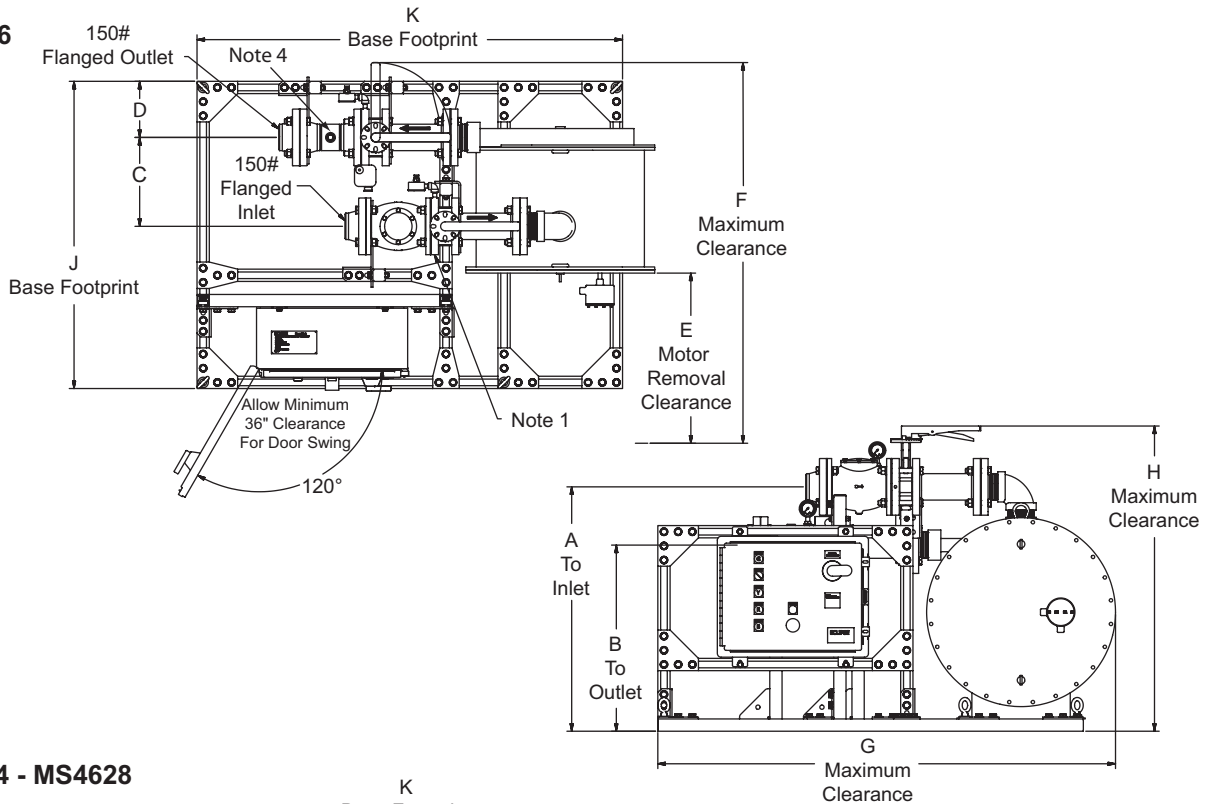
| BoostPak | Flange Sizes (150#) | | Connection Data | | | |
|----------|---------------------|--------|-----------------|-------------|------------|-----------|
| | Inlet | Outlet | A | B | C | D |
| MS3316 | 3 | 3 | 822 (32.3) | 626 (24.6) | 299 (11.8) | 189 (7.4) |
| MS3314 | 3 | 3 | 402 (15.8) | 613 (24.1) | 167 (6.6) | 182 (7.2) |
| MS3412 | 4 | 3 | 364 (14.3) | 553 (21.8) | 224 (8.8) | 184 (7.3) |
| MS4414 | 4 | 4 | 402 (15.8) | 613 (24.1) | 203 (8) | 184 (7.3) |
| MS4617 | 6 | 4 | 435 (17.1) | 684 (26.9) | 307 (12.1) | 187 (7.4) |
| MS4619 | 6 | 4 | 524 (20.6) | 822 (32.4) | 308 (12.1) | 187 (7.3) |
| MS4623 | 6 | 4 | 549 (21.6) | 895 (35.3) | 322 (12.7) | 185 (7.3) |
| MS4628 | 6 | 4 | 625 (24.6) | 1054 (41.5) | 316 (12.4) | 185 (7.3) |

| BoostPak | Maximum Envelope | | | | | |
|----------|------------------|-------------|-------------|-------------|-------------|-------------|
| | E | F | G | H | J | K |
| MS3316 | 1219 (48) | 1927 (75.9) | 1538 (60.6) | 1026 (40.4) | 1033 (40.7) | 1450 (56.3) |
| MS3314 | 737 (29) | 1603 (63.1) | 1356 (53.4) | 818 (32.2) | 883 (34.7) | 1300 (51.2) |
| MS3412 | 762 (30) | 1700 (66.9) | 1526 (60.1) | 758 (29.8) | 983 (38.7) | 1475 (58.1) |
| MS4414 | 762 (30) | 1664 (65.5) | 1531 (60.3) | 837 (32.9) | 983 (38.7) | 1475 (58.1) |
| MS4617 | 762 (30) | 1773 (69.8) | 1836 (72.3) | 907 (35.7) | 1083 (42.6) | 1792 (70.6) |
| MS4619 | 711 (28) | 1683 (66.3) | 1890 (74.4) | 1046 (41.2) | 1083 (42.6) | 1802 (70.9) |
| MS4623 | 889 (35) | 2027 (79.8) | 1946 (76.6) | 1119 (44) | 1158 (45.6) | 1881 (74.1) |
| MS4628 | 965 (38) | 2162 (85.1) | 2027 (79.8) | 1277 (50.3) | 1253 (49.3) | 1958 (77.1) |

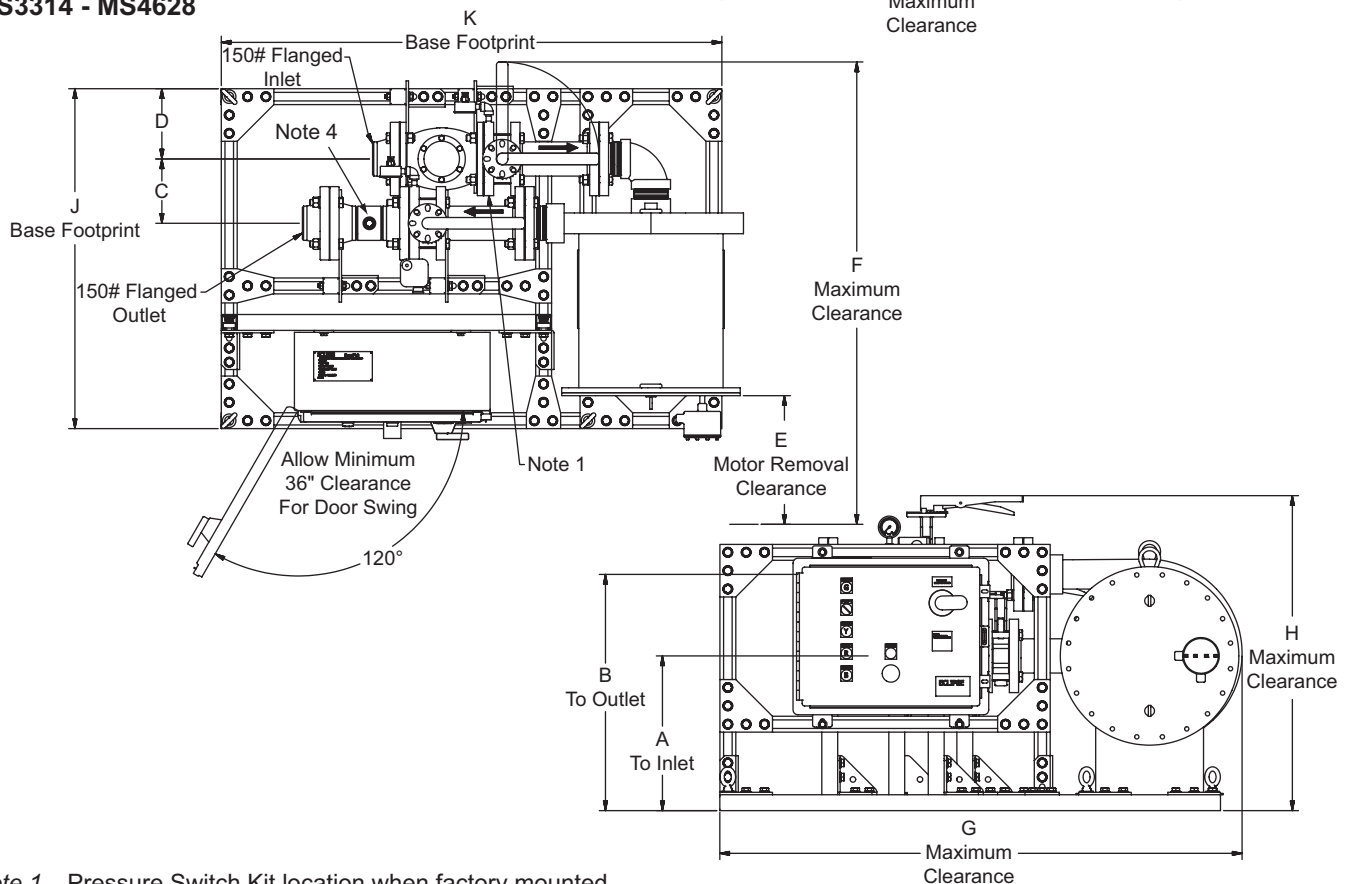
Notes: Dimensions shown are nominal. Variations of 2% may occur due to thread engagement and assembly tolerances.

Dimensions in Millimeters (inches) Medium Flow Simplex

MS3316



MS3314 - MS4628



Note 1 Pressure Switch Kit location when factory mounted.

Note 2 When Pressure Switch Kit is supplied loose by Eclipse, it is to be installed by customer in accordance with local codes.

Note 3 Customer is to secure Boostpak to foundation through unistrut base (customer drilled holes).

Note 4 Dimensions shown are nominal. Variations of 2% may occur due to thread engagement and assembly tolerances.

Note 5 Ensure proper clearances for motor removal.

Note 6 Flow control kit location, when factory mounted.

ECLIPSE[®]
Innovative Thermal Solutions



Offered By:

Power Equipment Company
2011 Williamsburg Road
Richmond, Virginia 23231
Phone (804) 236-3800
Fax (804) 236-3882

www.peconet.com